



*Boris Bally's
Brave 3 necklace
at Society for
Contemporary
Craft*

PA / Pittsburgh
**Society for
Contemporary Craft**

*Enough Violence:
Artists Speak Out*
to Mar. 22
contemporarycraft.org
enoughviolence.net

Several of the 40-some works on view here are disturbing, but none as much as the crises they address: street crime, genocide, gang violence, war, domestic abuse. The 14 artists in this show find deeply personal ways to interpret our

tragic propensity to harm one another, while positing ways art can help light a path beyond it. Boris Bally's *Brave 3* necklace, for example, made with 100 triggers salvaged from a gun buy-back program, evokes the talismanic bear-claw necklaces worn by Native Americans to transfer the power of the animal's disabled defenses to the wearer. In her wall sculpture *Implosion 1*, Beth Barron uses found Band-Aids and red thread to probe the process of healing.

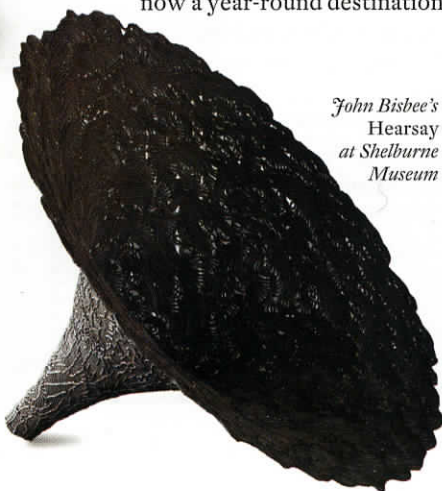
TX / Houston
**The Museum of
Fine Arts, Houston**

*Beyond Craft:
Decorative Arts from the Leatrice
S. and Melvin B. Eagle Collection*
Feb. 23 – May 26
mfah.org

This is the first major exhibition of works gathered by prominent craft collectors and advocates Melvin and Leatrice Eagle, the latter a past ACC board of trustees chair. Beginning in 1960, the Eagles acquired works by some of the 20th century's most innovative and accomplished artists (Richard Marquis, Peter Voulkos, and Wendell Castle, to name a few). In 2010, the Eagles decided to give their collection a wider audience, and donated it to the MFAH; about 90 objects by 50 artists are on view here.



*Peter Voulkos'
The Eagle Has
Landed at the
Museum of Fine
Arts, Houston*



*John Bisbee's
Hearsay
at Shelburne
Museum*

VT / Shelburne
Shelburne Museum

John Bisbee: New Blooms
to May 26
shelburnemuseum.org

How does John Bisbee's garden grow? With spikes and nails and a lot of sheer inventiveness. The Maine sculptor turns stalwart metal fasteners into works that often appear delicate; this show of floral-themed pieces includes a field of steel flowers.

The Shelburne Museum itself is a quirky work of art, with 38 exhibition buildings that house everything from paintings to whirligigs. Twenty-five are historic structures moved from elsewhere in New England and New York – barns, houses, a schoolhouse, a lighthouse, even a covered bridge and a steamboat – beloved by warm-weather visitors. And with the opening last year of the Pizzagalli Center for Art and Education, the Shelburne is now a year-round destination.



*Sergei Isupov's
To Fish at Racine
Art Museum*

WI / Racine
Racine Art Museum

Collection Focus: Sergei Isupov
Feb. 23 – Jun. 8
ramart.org

Are the objects in this mid-career retrospective paintings or sculptures, or both? The Russian-born Isupov's people and animals, elaborately rendered on the smooth surfaces of his ceramic forms, seem to belong to a half-dream world, silently acting out narratives that may be specific or universal. (For a look at the artist's unusual home, see "The Personal Is Professional," Feb./Mar. 2013.)