

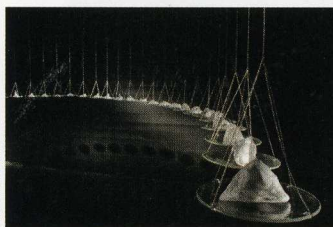


LEFT (2):
Quilts at the International Quilt Study Center & Museum

BELOW:
Emily Nachison at Bullseye Gallery

OR / Portland
Bullseye Gallery
The Realm of Quantifiable Truths: Emily Nachison

to Aug. 30
bullseyegallery.com
The sparks for Emily Nachison's work are natural phenomena, but her glass and mixed-media sculptures have a supernatural mystique, appearing simultaneously grounded and ethereal.



Dan Kvicka

TN / Memphis
Metal Museum
Protective Ornament: Contemporary Armor to Amulets to Sep. 7
metalmuseum.org
It's metal – wanna make something of it? The artists in this show take on those fightin' words with fourscore works of armor, amulets, brass knuckles, chain mail, and other gear of aggression and defense.

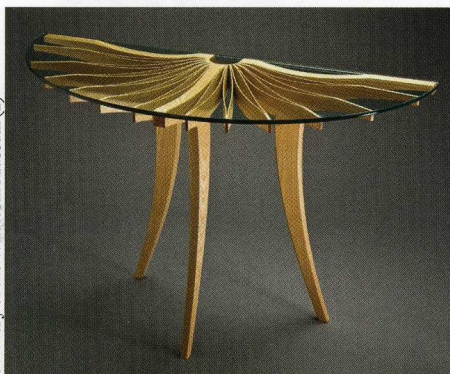


Rex Rystedt

NH / Newbury
Mount Sunapee Resort
81st Annual League of NH Craftsmen's Fair
Aug. 2 – 10
nhcrafts.org
More than 350 craft artists offer work for sale; classes, demonstrations, workshops, and entertainers, from musicians to mind readers, keep visitors busy between perusal and purchases.

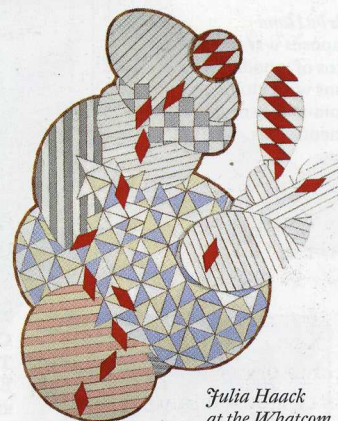
NY / New Paltz
Samuel Dorsky Museum of Art
Dick Polich: Transforming Metal Into Art
Aug. 27 – Dec. 14
newpaltz.edu/museum
How do artists get grand ideas for monumental metal works off the ground? For 50 years, artists such as Isamu Noguchi, Roy Lichtenstein, and Nancy Graves have turned to metallurgist and foundry owner Dick Polich, who blends expertise and experimentation to translate their sketches to sculptures. On view are finished works and artifacts from their creation.

Courtesy of the Whatcom Museum (2)



LEFT:
Seth Rolland at the Whatcom Museum

WA / Bellingham
Whatcom Museum
Reaching Beyond: Northwest Designer Craftsmen at 60
Sep. 14 – Jan. 4
whatcommuseum.org
The Northwest Designer Craftsmen celebrate six decades of supporting craft in the Pacific Northwest with a juried show of glass, metal, clay, fiber, and mixed media by 90 artists who bookend its history: 31-year-old ceramist Eva Funderburgh is the NWDC's youngest current member, and versatile artist and teacher Russell Day, at 102, is its last living founder.



Julia Haack
at the Whatcom Museum



Charlotte Kruk
at Racine Art Museum

LEFT:
Nancy Worden at the Metal Museum

RIGHT:
Robert W. Ebendorf at Racine Art Museum

WI / Racine
Racine Art Museum
Collection Focus: The Life and Times of Robert W. Ebendorf, Jeweler and Metalsmith
to Jan. 18
ramart.org
Robert W. Ebendorf's assemblages, jewelry, and hollowware are made of metal, found objects, and the wealth of ideas and

knowledge he has amassed over 50 years of his cutting-edge career. Also on view: "Charlotte Kruk: Consumer Couture – The Politics of Having" (to Jul. 26, 2015), a show of sculptures and garments fabricated from candy wrappers, coffee bags, and other packaging that make points about who we are, what we buy, and where it goes.