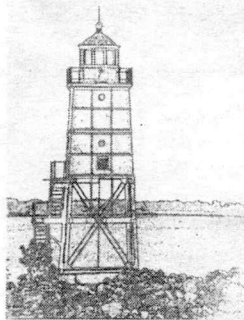


# What's Happening

## ART

### Simonson displays Racine cyanotypes

RACINE — “Just Racine, Cyanotypes” by Tom Simonson is the featured exhibit through Nov. 10 at Spectrum Gallery, located in the east Building of the DeKoven Center, 2050 Wisconsin Ave.



A cyanotype postcard by Tom Simonson.

The show features a collection of 20 familiar Racine architectural images created with historical methods combined with a modern digital photographic process. A timeline of this process

is also presented and visitors will see how Simonson worked with a digital photograph, converting it to a digital negative and applying the cyanotype process to create the final image. Cyanotype — with a short range of bluish tones — was the first imaging process made from a photographic negative to paper in 1842.

Many of Simonson's works are for sale. Gallery hours are noon to 5 p.m. Saturday and Sunday in October, and noon to 4 p.m. beginning in November. The exhibit can also be seen by appointment by calling 262-634-4345.

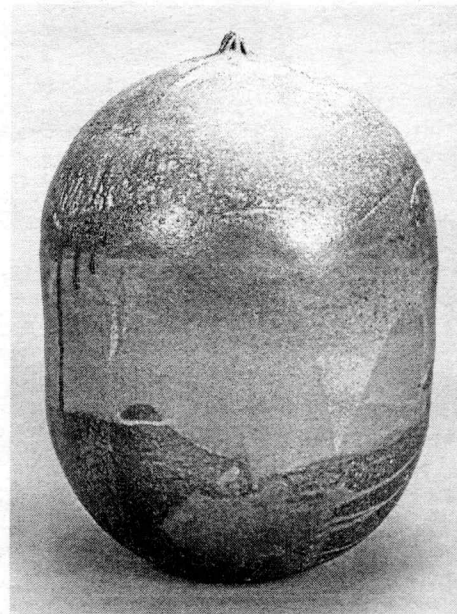
### Takaezu art on display at RAM Windows on Fifth Gallery

RACINE — “It's Like Poetry: Building a Toshiko Takaezu Archive at RAM” will be on display through July 26, 2020, in the Windows on Fifth Gallery at the Racine Art Museum, 441 Main St.

The exhibition features a variety of works from RAM's collection by renowned artist Toshiko Takaezu (1922-2011).

RAM's archive now numbers over 30 works, including Takaezu's most expansive grouping, the installation comprised of 14 “human-sized” forms, the Star Series. Significantly, the museum's holdings span the range of Takaezu's working career — with a double-spouted pot from the 1950s being the earliest and the Star Series (1999-2000) being the latest. There are also drawings and prints — works with forms that echo the shapes of Takaezu's three-dimensional pieces while also reflecting her sensitivity to shape and color. This exhibition features small bowls, toasting goblets, platters, two-foot high closed pieces and large spheres created over several decades of the artist's career.

Takaezu created work — paintings, prints, fiber and cast bronze in addition to her well-known ceramic pieces of varying sizes — that embodied a poetic balance between art and life. RAM has been acquiring a range of pieces by Takaezu — from individual forms to multi-part installations — and establishing an archive that documents this significant artist who pushed the



Jon Bolton

“Purple Closed Form” by Toshiko Takaezu.

boundaries of clay in the late 20th century.

Takaezu was inspired by nature and the environment, noting the early influence of her home state, Hawaii. She combined this with an interest in color and surface — her signature Makaha blue (a rich blue) being one of many tones she used. She was an artist in tune with concepts of balance and harmony — interior/exterior, planning/unpredictability, calm/tense, large/small.

## THEATER

### ‘On Golden Pond’ auditions set at Racine Theatre Guild

RACINE — The Racine Theatre Guild, 2519 Northwestern Ave., will hold open auditions for the beloved theater classic, “On Golden Pond,” at 7 p.m. Monday and Tuesday, Nov. 4-5.

Ethel and Norman Thayer have spent every summer over the last 48 years at their lake home on Golden Pond. This year is blanketed in melancholy from

Norman's failing memory and health until their daughter comes to visit. She brings her new fiancé's son, Billy Ray Jr., to live with them. He and Norman form an unexpected bond in this beloved touching and funny theater classic.

Roles are available for a man and woman ages 60s to 80s, one woman and two men ages 30s to 50s, and one teenage boy.

Auditions consist of a cold reading from the script. Director is Nathan Stamper.

Scripts may be checked out in advance from the box office with a \$10 deposit. The show will go into rehearsal in November and will be performed weekends Jan. 19-26. More information about role requirements can be found at [racinetheatre.org/audition](http://racinetheatre.org/audition).