



4



5



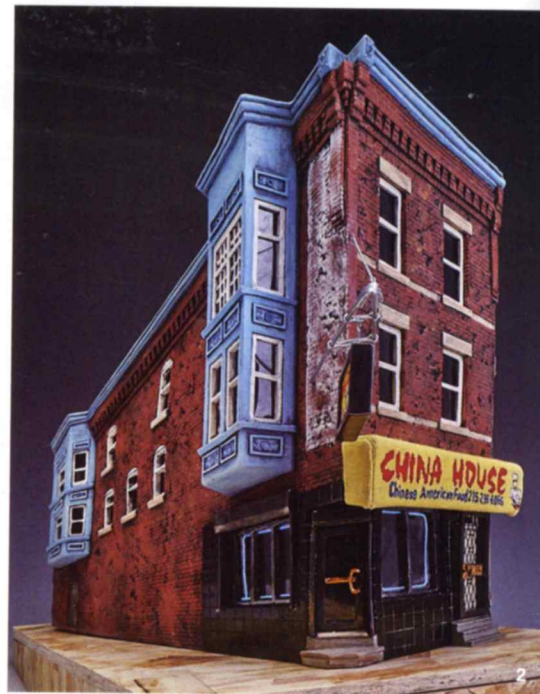
6

4 Toshiko Takaezu's *White Heart*, 32 in. (81 cm) in height, stoneware, glaze, circa 1985. *Gift of the artist.* 5 Toshiko Takaezu's *Purple Closed Form*, 18¾ in. (48 cm) in height, stoneware, glaze, 2005. *Promised gift of Johnson Bank.* 4, 5 Photos: Jon Bolton. "It's Like Poetry: Building a Toshiko Takaezu Archive at RAM," at Racine Art Museum (www.ramart.org) in Racine, Wisconsin, through July 26. 6 Claire Curneen's *Mary Magdalene*, 22½ in. (57 cm) in height, porcelain, gold luster, 2013. *Courtesy of Ferrin Contemporary.* "Striking Gold: Fuller at Fifty," at The Fuller Craft Museum (www.fullercraft.org) in Brockton, Massachusetts, through April 5.

exposure



1



2



3



4



5

1 Prue Venables' black bowl and pierced ladle, to 11¼ in. (30 cm) in width, Limoges porcelain, wheel thrown and altered, 2005. *Photo: Terence Bogue. "Living Treasures: Masters of Australian Craft,"* at Hamilton Gallery (www.hamiltongallery.org) in Hamilton, Victoria, Australia, through February 9. 2 Carly Slade's *2046 W Diamond St.*, ceramic, metal, embroidery, electroluminescent wire, 2018. "City Wide," at Jane Hartsook Gallery at Greenwich House Pottery (www.greenwichhouse.org) in New York, New York, January 10–February 7. 3 Joan Pearson Watkins' teapot, 9 in. (23 cm) in height, stoneware, glaze, circa 1955. *Gift of the Joan Pearson Watkins Revocable Trust.* 4 James Lovera's bowls, to 6¾ in. (17 cm) in diameter, porcelain, glaze, circa 1975. *Gift of James T. Gibson, Jr.* "Objects Redux: Small-Scale Studio Craft of the 1950s and 1960s," at Racine Art Museum (www.ramart.org) in Racine, Wisconsin, through February 2. 5 Flower-shape wine cup and stand, porcelain, Qingbai ware, Chinese, Northern Song dynasty, 960–1127 CE. *Photo: Bruce M. White. "The Eternal Feast: Banqueting in Chinese Art from the 10th–14th Century,"* at Princeton University Art Museum (<https://artmuseum.princeton.edu>) in Princeton, New Jersey, through February 16.