

WATERCOLOR WISCONSIN



Suzie's Little Secret, Janet Roberts, Gouache

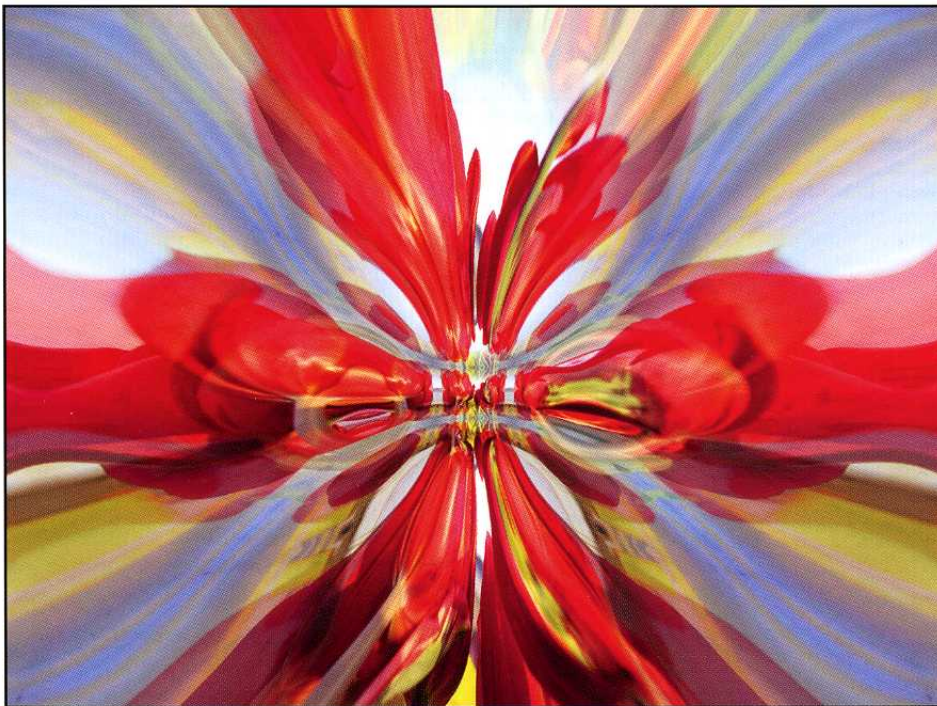
A number of WVA members have work at the Wustum Museum in Racine in the Watercolor Wisconsin Show. On view till April 24.

CHUCK WEBER: VIOLIN ART



This past fall Chuck was commissioned to create a portrait for the Milwaukee Symphony Orchestra, of its celebrated new conductor, Edo de Waart.... on the back of a retired symphony violin. The unique portrait was featured at a Live Auction at the Gala Opening Reception, Banquet and Concert welcoming the new "Maestro" and the opening of the 2009-10 symphony season. Cool project, and Chuck got to rub shoulders with some schmaltzy folk.

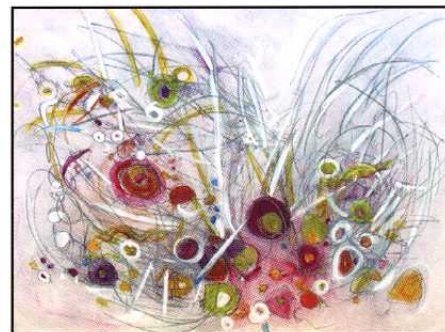
MIDWEST SEASONS AT WAUSAU'S CVA



Spring Fling, manipulated photograph, by Mary Ann Carter.

Mary Ann Carter's work "SPRING FLING" is in the 20th Annual Midwest Seasons Exhibit at the Center For The Visual Arts, 427 North Fourth Street Wausau January 15 - February 28.

CHRISTINE ALFERY



Spring's First Burst

Christine Alfery had a work accepted in the Northwest Art Center - Minot State University "Americas 2010: Paperworks" exhibition. Alfery is also in the Center for the Visual Arts, Wausau Wisconsin for the 20th Annual Midwest Seasons Exhibit. on display through February 28 at the Center for Visual Arts in Wausau. Alfery also curated and is participating in a group show titled "A Soul's Winter" in Three Lakes Wisconsin at the Center for the Arts in January. Alfery is also participating in a show in January and February at Howard Young Medical Center put on by the Lakeland Art League, Minocqua Wisconsin.