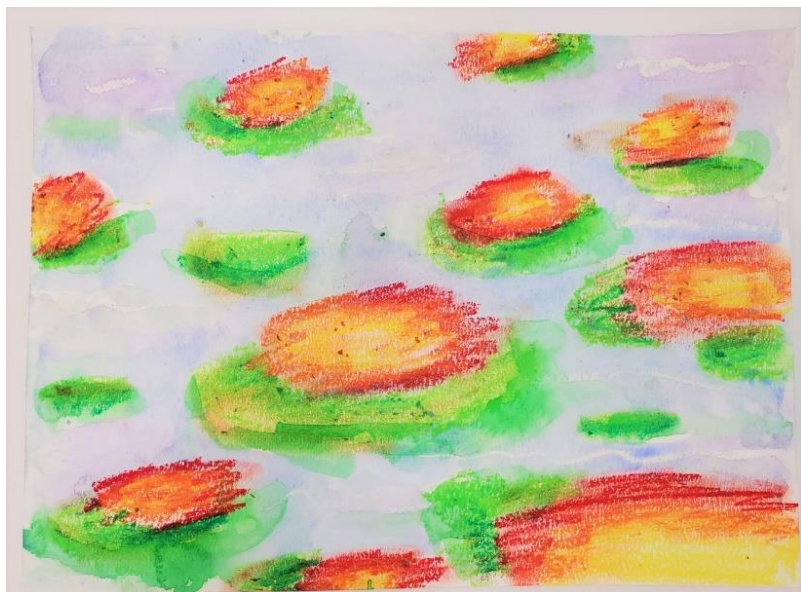


R | A | M

Claude Monet's *Water Lilies*

Water Lilies is a series of over 250 oil paintings by French Impressionist Claude Monet. The paintings depict the flower gardens at his home in Giverny, outside of Paris, France. The series was the main focus of his artistic production during the last thirty years of his life.



Supplies

- Cray-Pas, Oil Pastels, or Crayons
- Watercolor Paper
- Watercolor or Tempera Paint
- Brushes
- Water
- Paper Towel

Directions

1. Create a variety of yellow flower shapes in all sizes. Keep the design loose—not too detailed—to represent water lilies. This can be done with Cray-Pas, oil pastels, or crayons.
2. Add pink oil pastel into the yellow to add depth. Then, use red and orange oil pastel to create contrast.
3. Use your fingers to smooth and blend colors, if you are using Cray-Pas or oil pastel.
4. Draw light green loose ovals around the bottom of each lily.
5. Add squiggly or swirly lines with white oil pastel or crayon in the background to create waves, or movement in the water.
6. Wet your paper using only water on your brush. Be sure to cover the entire surface.
7. Using a wet-on-wet technique, paint very loosely with blue watercolor or watered down tempera on the paper. The crayon or oil pastel flowers will resist the paint.
8. Apply purple and green paint in areas to create depth within the composition.
9. Your painting will be wet! If you wish, you can move the paint around by shifting the paper left to right, top to bottom, to drip the paint for a watery look.