

Tune in at 8 a.m.  
every Wednesday for  
"Arts Express"

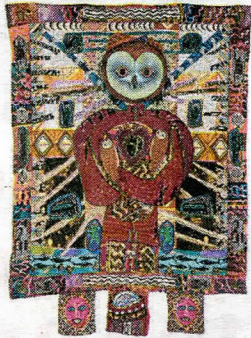
**VISUALART | PREVIEWS**

**Racine Art Museum Unveils Three Summer Exhibitions**

BY TYLER FRIEDMAN

**T**hree summer exhibitions opening June 18 at the Racine Art Museum reinforce the institution's reputation as one of the nation's preeminent institutions dedicated to elevating traditional crafts such as quilting and pottery to the status of fine art.

"Small Gifts from Big Donors—Part 2" is the second installment of the museum's yearlong thanksgiving to the patrons whose gifts of more than 9,000 pieces have cemented RAM's standing. "Collection Focus: Renie Breskin Adams" presents four decades worth of scenes stitched from fabric, cotton thread and wool thread then brightly colored with dyes, crayon and acrylic paint. The exhibition of more than 30 works marks RAM's establishment of an archive for this distinctive contemporary artist. Wife-and-husband team of Susan Shie and James Acord combine fabric, thread, paint, text and found objects to create quilts that defy stereotypes. "Shie and Acord: Recent Acquisitions" is a delightful romp through small and large-scale works treating atypical themes like fortune tellers and anthropomorphized animals.



(right, top to bottom) Susan Shie and James Acord, *Owl Woman: A Green Quilt*; Renie Breskin Adams, *Sky Chicken Sprouts Power Wings*; John Nygren, *Blue Ridge Landscape Vessel with Three Trees (#1355)*

PHOTOS BY JON BOLTON

**"Moments and Markers: An Adolph Rosenblatt Retrospective"**  
Jewish Museum Milwaukee | 1360 N. Prospect Ave.

Adolph Rosenblatt (1933-2017) sculpted deeply humanistic scenes of people engaged in everyday activities such as dining at lunch counters, sitting in a theater balcony and lounging in saunas. Rosenblatt was also a beloved teacher at UW-Milwaukee who inspired generations of students to develop their own inimitable voices. "Moments and Markers: An Adolph Rosenblatt Retrospective" celebrates the artist's indelible legacy through his paintings, drawings, bronze-cast works, ceramic figures, sculptural tableaus and large-scale installations. The exhibition runs June 16 through Aug. 27.

**Lakefront Festival of Arts**  
Grounds of the Milwaukee Art Museum,  
700 N. Art Museum Drive

The 53rd annual Lakefront Festival of Arts returns to the grounds of the Milwaukee Art Museum over Father's Day weekend, June 16-18. The massive event anticipates some 30,000 attendees for the multi-sensory experience featuring not only 170+ artists from across the nation, but also live music, interactive activities for kids, a silent auction, and diverse offerings of food and beverages. General admission is \$17, students/seniors \$15 and a three-day pass is \$25.

**stupid computer!**

**WE CAN HELP.**  
specializing in small businesses  
evaluate setup network  
troubleshoot build train  
**chipconnection**  
PC & MAC  
**(414) 687-9650**  
www.chipconnection.com

**WE DO HOUSE CALLS**

the **Cat** ♥

Gentle, Loving, Comp

Kathryn  
Ann

- Cat B
- Quality Feline Me
- Nutritional & E
- Grooming • Ac
- Food

**Best of Milwaukee 2012**

236 North Water Street • (414)272-CATS

EDUCATORS CREDIT UNION PRESENTS

**jazz in the park**  
cathedral square | milwaukee

JUNE 1 - AUGUST 31

**PLANTLAND**

OF GROV  
INCLUDING T

ANNUA  
—H/

A W A I  
WINNI

PEP

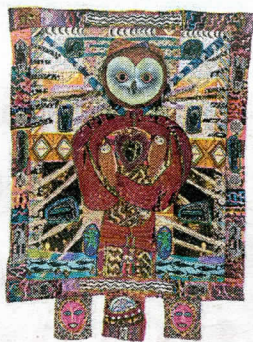
6204 S Hwy  
faceb

rt  
Unveils  
mmer  
ns  
MAN

mmmer exhibitions opening  
at the Racine Art Museum  
the institution's reputation  
the nation's preeminent  
ns dedicated to elevating  
as quilting and pottery to

Donors—Part 2" is the second  
um's yearlong thanksgiving  
fts of more than 9,000 pieces  
standing. "Collection Focus:  
resents four decades worth of  
oric, cotton thread and wool  
ored with dyes, crayon and  
ion of more than 30 works  
ent of an archive for this  
y artist. Wife-and-husband  
James Acord combine fabric,  
ound objects to create quilts  
hie and Acord: Recent Acqui-  
mp through small and large-  
ical themes like fortune  
phized animals.

Susan Shie and James Acord,  
en Quilt; Renie Breskin Adams,  
wer Wings; John Nygren, Blue  
essel with Three Trees (#1355)  
PHOTOS BY JON BOLTON



nd Markers:  
osenblatt Retrospective"  
ilwaukee | 1360 N. Prospect Ave.

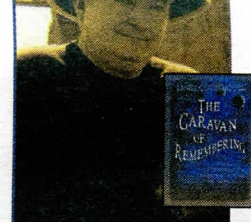
(1933-2017) sculpted deeply humanistic scenes of peo-  
day activities such as dining at lunch counters, sitting  
and lounging in saunas. Rosenblatt was also a beloved  
akee who inspired generations of students to develop  
oices. "Moments and Markers: An Adolph Rosenblatt  
ates the artist's indelible legacy through his paintings,  
works, ceramic figures, sculptural tableaus and large-  
e exhibition runs June 16 through Aug. 27.

estival of Arts  
waukee Art Museum,  
Drive

kefront Festival of Arts returns to the grounds of the  
m over Father's Day weekend, June 16-18. The massive  
e 30,000 attendees for the multi-sensory experience  
+ artists from across the nation, but also live music,  
or kids, a silent auction, and diverse offerings of food  
ral admission is \$17, students/seniors \$15 and a three-

WE CAN HELP.  
specializing in small businesses  
evaluate setup network  
troubleshoot build train  
chipconnection  
PC & MAC

(414) 687-9650  
www.chipconnection.com



1717 N. 73rd St.,  
Wauwatosa  
REALIZE  
YOUR  
LIFE'S  
MISSION!

www.caravanofremembering.com

WE DO  
HOUSE  
CALLS

the  
Cat ♥ Doctor s.c.

Gentle, Loving, Compassionate Health Care Just for Cats

Kathryn Christensen, DVM  
Anna Kelton, DVM

- Cat Boarding Available •
- Quality Feline Medicine & Surgery • Dentistry •
- Nutritional & Behavioral Consultations •
- Grooming • Adoptable Rescue Animals •
- Food • Supplies • Gifts •



236 North Water Street • (414)272-CATS (2287) • catdoctor98.com

EDUCATORS CREDIT UNION PRESENTS  
jazz in the park  
cathedral square milwaukee  
JUNE 1 - AUGUST 31

**JUNE**  
15 The Rhythm Rockets  
22 Legends of Milwaukee Jazz  
29 Alma Afrobeat Ensemble

**JULY**  
6 The Blues Disciples

Presenting Sponsor  
Educators CREDIT UNION  
BUD LIGHT  
MADISON MEDICAL CENTER  
Shepherd EASTOWN

PLANTLAND

ORGANICALLY GROWN HEIRLOOMS  
INCLUDING TOMATOES, VEGETABLES & GREENS

ANNUALS & VEGETABLES  
—HALF OFF—

AWARD WINNING ROSES

PERENNIALS

6204 S Howell, Milwaukee • 414-768-0126  
facebook.com/PlantLandInc