

# Arts Guide

WISCONSIN



Art Galleries  
Designer Jewelry  
Antiques  
Art Museums  
Performing Arts

## RAM



### Racine Art Museum

See pages 10-11

The largest and most significant contemporary craft collection in North America.



Serving Wisconsin, Illinois, Iowa, Michigan & Minnesota

Available at Wisconsin State Welcome Centers

FALL-WINTER 2021

# RAM

## Explore America's Largest Craft Collection



Presenting work from artists who create meaningful statements in craft media, **Racine Art Museum** dispels any differentiation between fine art and craft, and between the artist

and the craftsperson. Exhibitions at RAM emphasize ideas behind the artwork, rather than following strict media categories.

All museum gallery spaces change two to three times each year, promising new experiences for every visit. Exhibitions are drawn almost exclusively from RAM's extensive and dynamic holdings of over 10,000 pieces. **Collection Focus:**

**Mara Superior**, on view through January 15, offers the debut of an archive of work by this respected American ceramic artist. Made between 1982 and 2018, these recently acquired pieces are on display with three others by Superior already in RAM's collection. A 20-page full-color catalogue complements this significant exhibition and adds new scholarship to the field. Included with regular admission, the publication is also available in the RAM Museum Store and at [racineartmuseumstore.org](http://racineartmuseumstore.org).



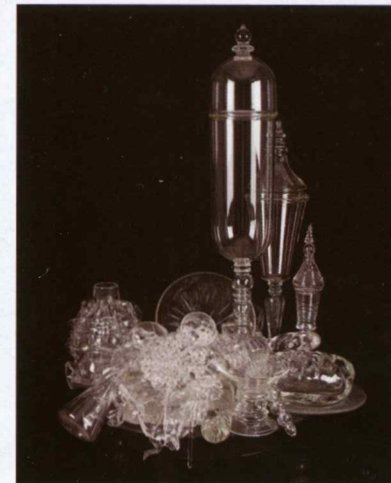
(above left)  
**Eddie Dominguez**  
*Fish Dinner*, 1987

(above right)  
**Mara Superior**  
*A Tea House*, 1988  
Photos: Jon Bolton

# RAM

Through January 22, **Alien Invasion: (Un)Familiar Forms in Contemporary Art** features works by contemporary artists who do not shy away from the oversized, dramatic, or intriguing. Often taking inspiration from the natural world, most of these artists depict friction and tension through organic forms.

The exhibition, **Component Parts: Artworks Made of Multiple Elements**, on view through February 12, includes works from RAM's permanent collection that are comprised of multiple parts. Whether they be a single complex object or a series of several pieces unified as one work, the sum of these parts is more expressive than the whole.



**Beth Lipman**  
*Still Life with Detritus*  
(detail), 2013  
Photo: Robb Quinn

(below left)  
**David Regan**  
*Dump Run*, 2009  
Photo: Jon Bolton

In RAM's Windows on Fifth Gallery, **Playful/Pensive: Contemporary Artists and Contemporary Issues** presents



artworks that are either playful or thought-provoking, and sometimes both—seeming lighthearted at first but ultimately illuminating deeper, more complex issues. Visible to passersby on

the sidewalk through July 9, these pieces reflect personal, social, and cultural issues and ideas in sometimes unexpected ways. More about current exhibitions and upcoming virtual programming may be found at [ramart.org](http://ramart.org).